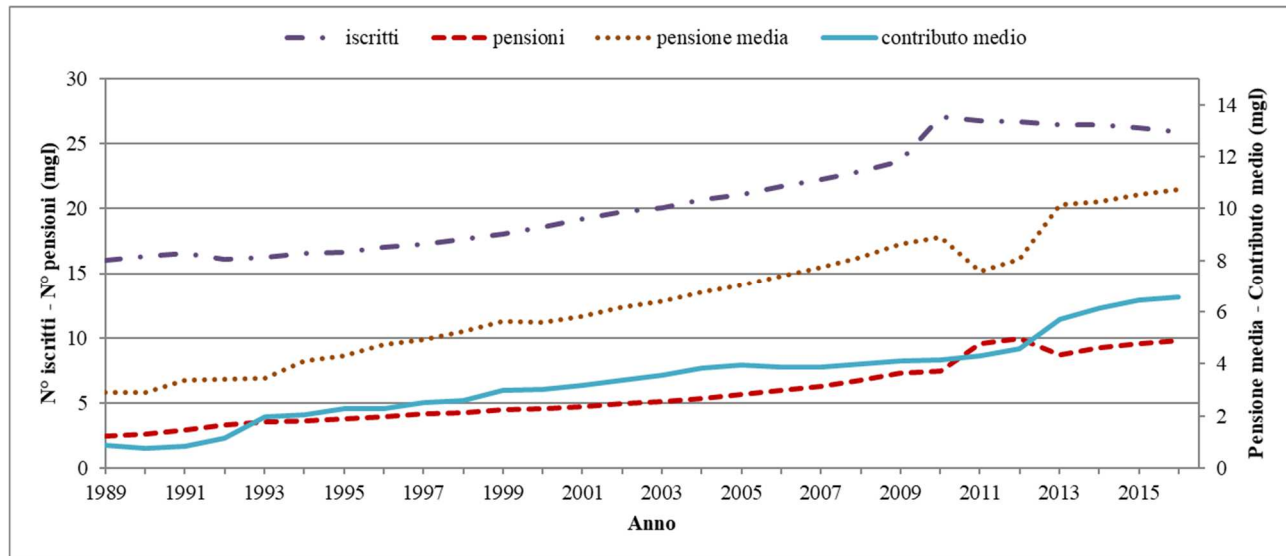


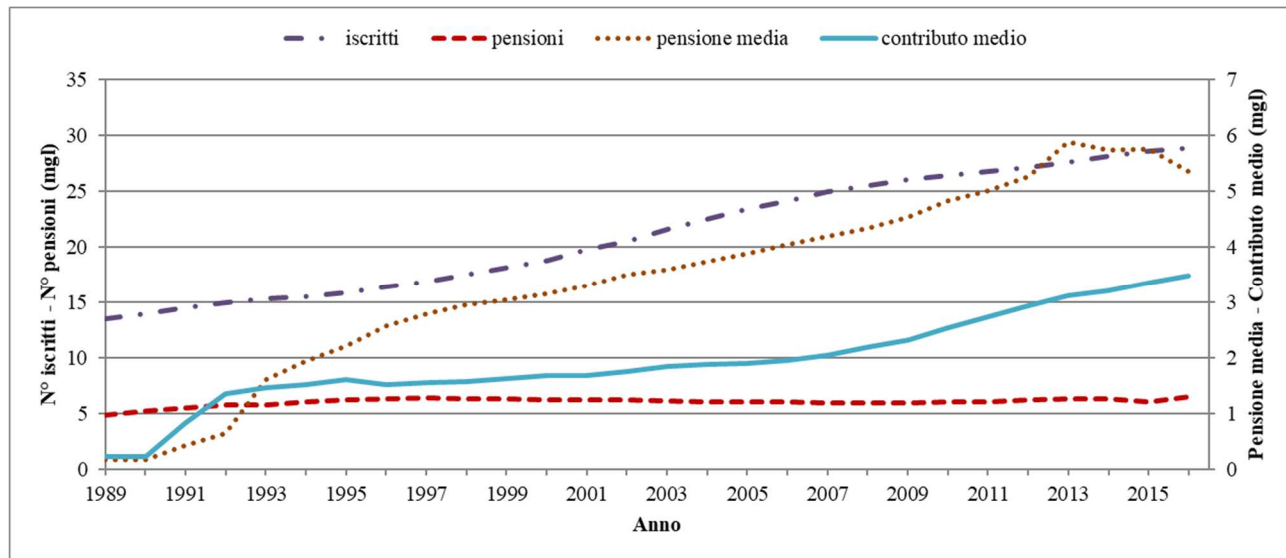
**Grafici dal 1989 al 2016 relativi a numero pensioni, numero iscritti, pensione media e contributo medio, delle Casse Privatizzate dei Liberi Professionisti**

**CASSE 509**

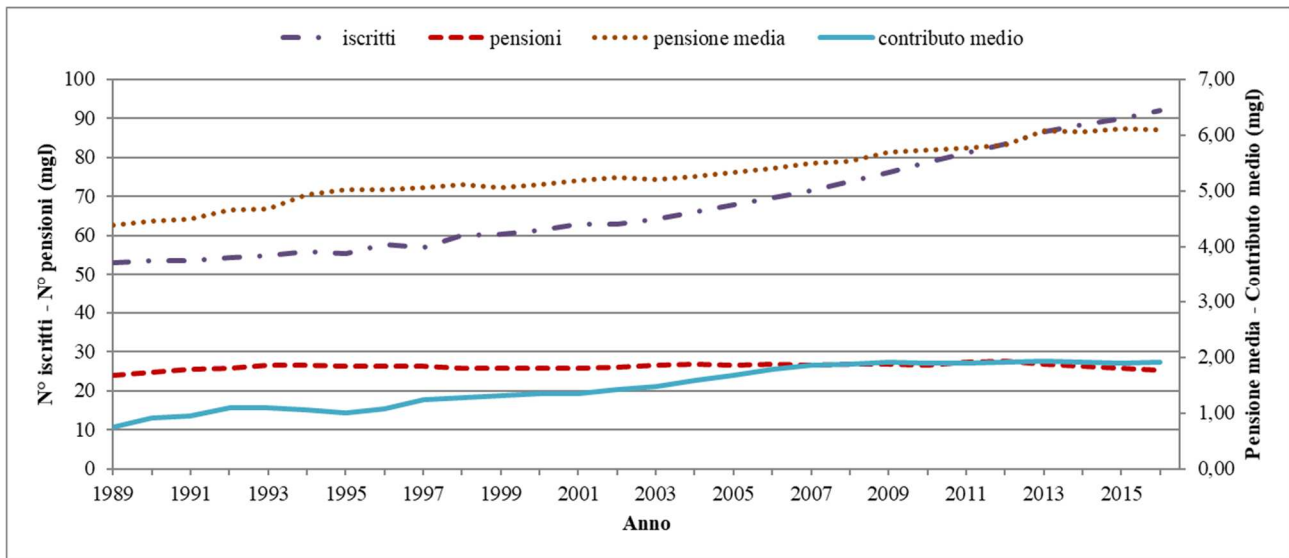
**ENPACL**



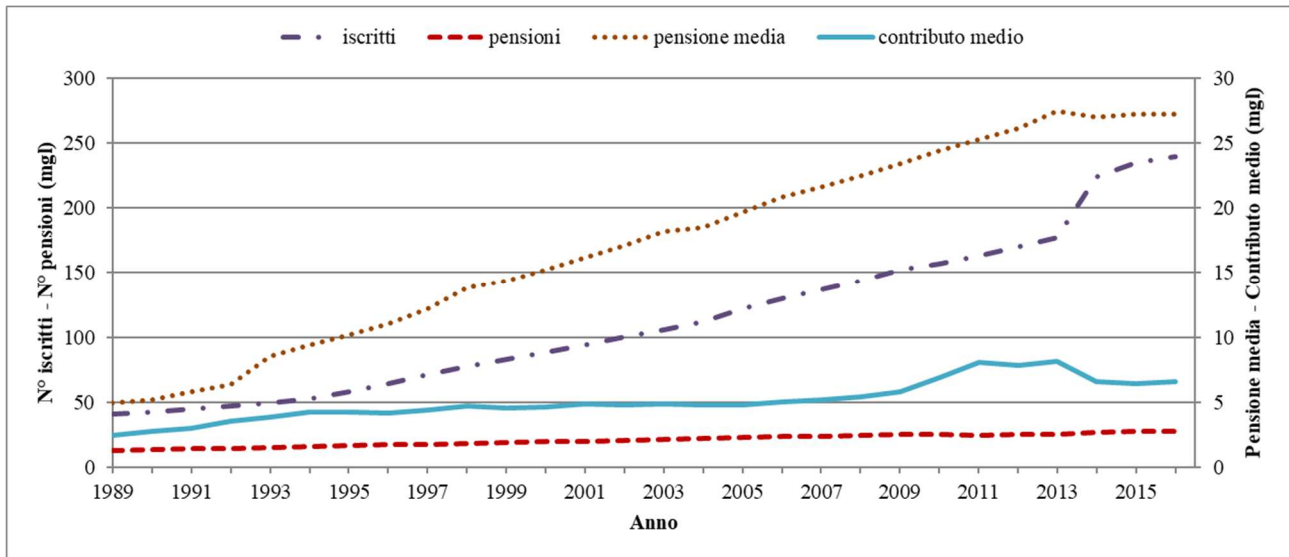
**ENPAV**



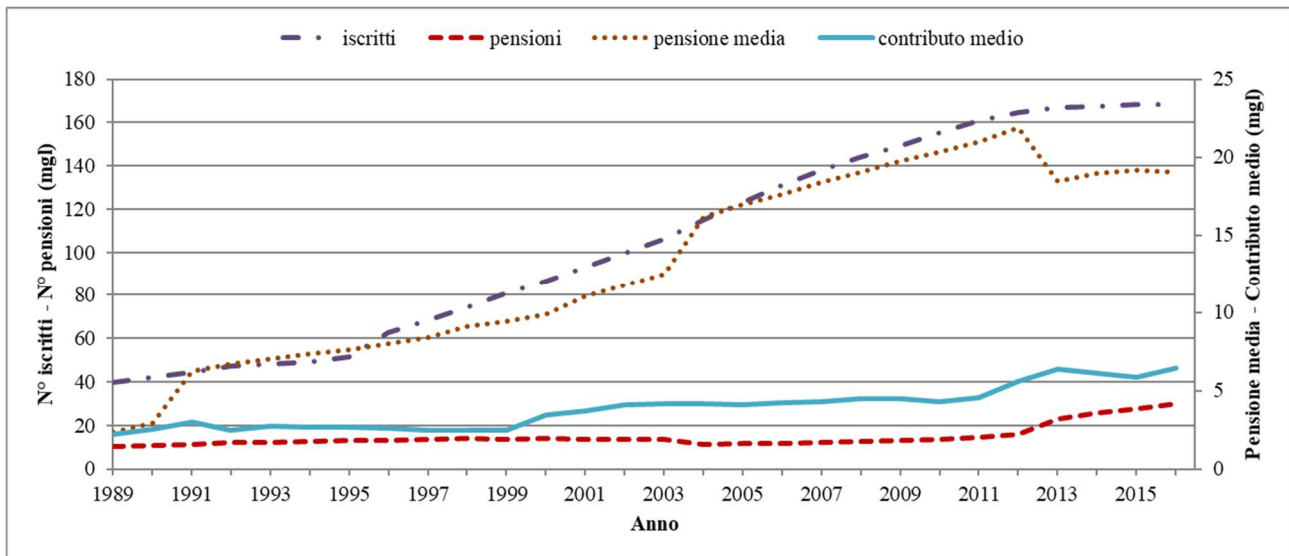
## ENPAF



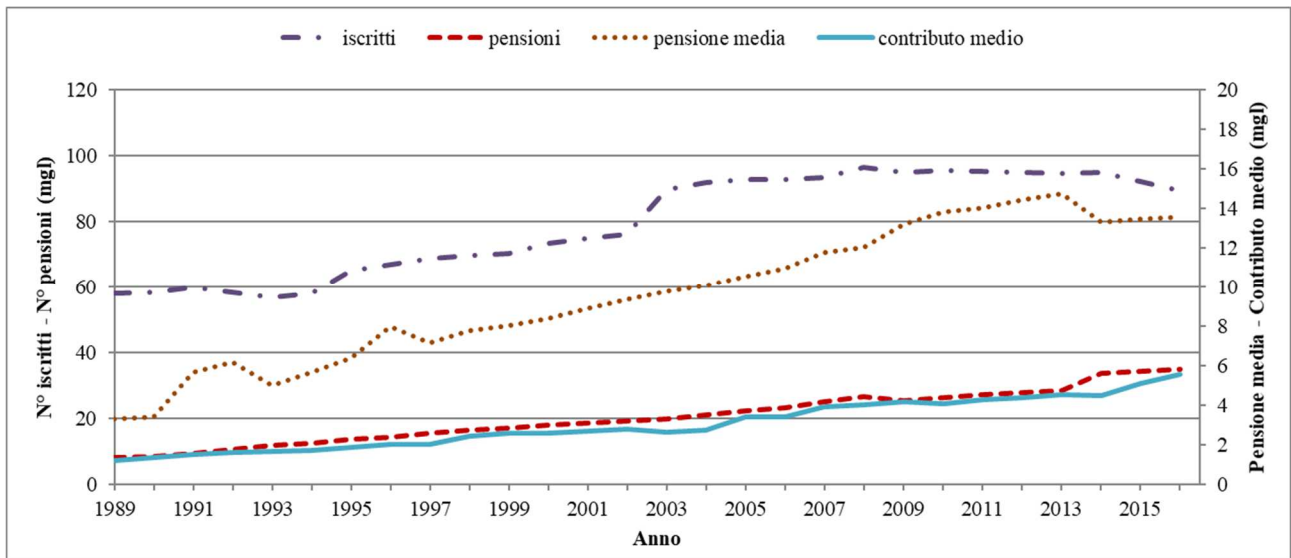
## CASSA FORENSE



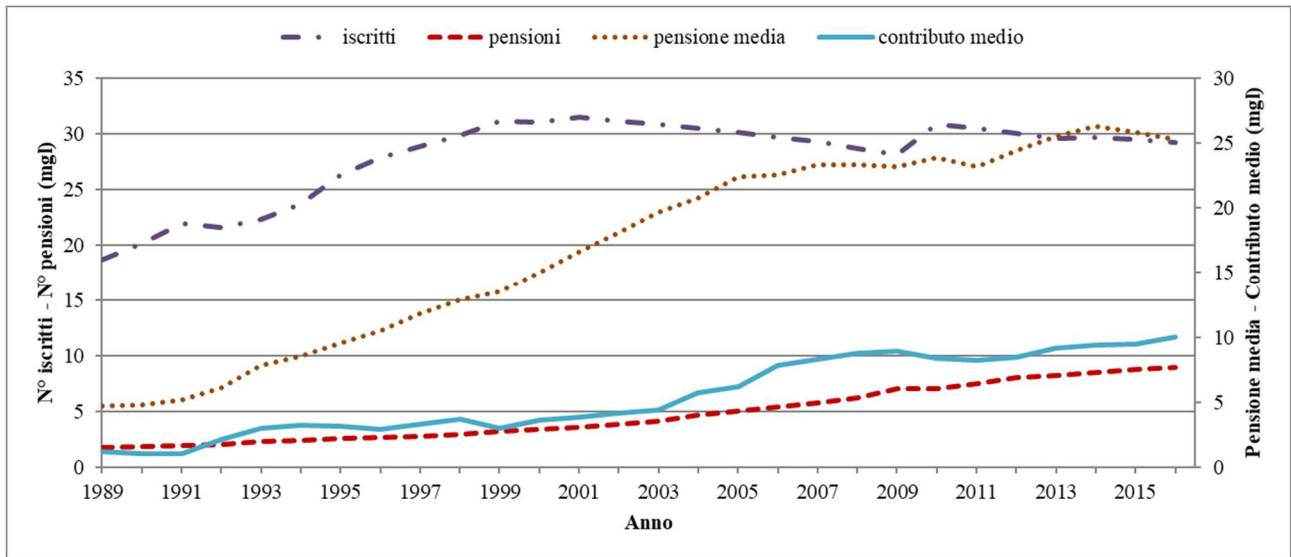
## INARCASSA



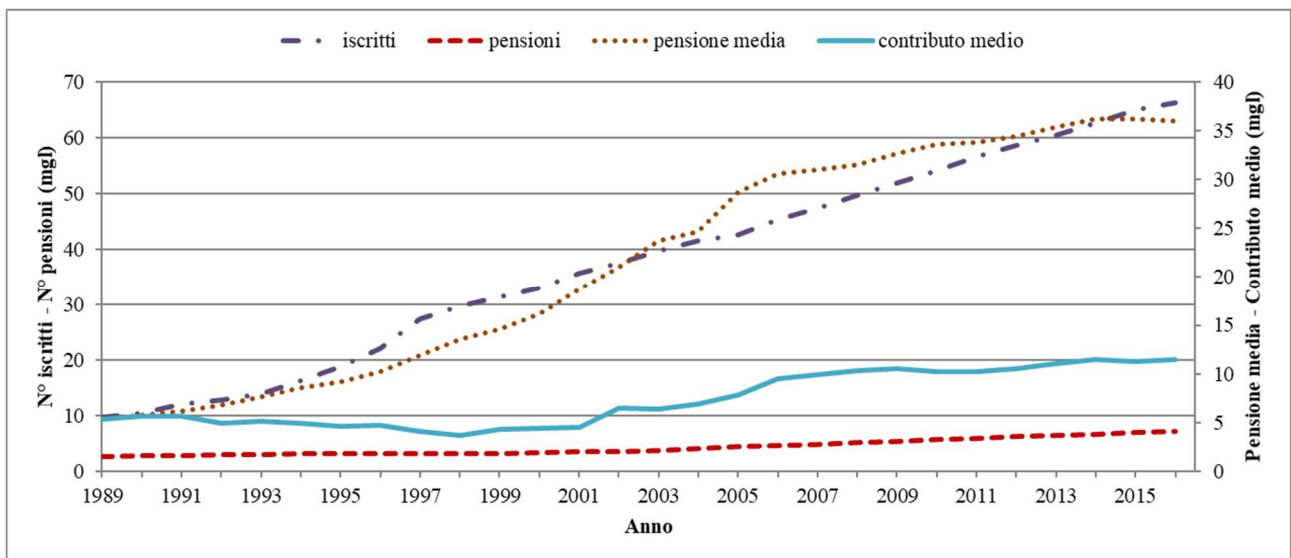
## CASSA GEOMETRI



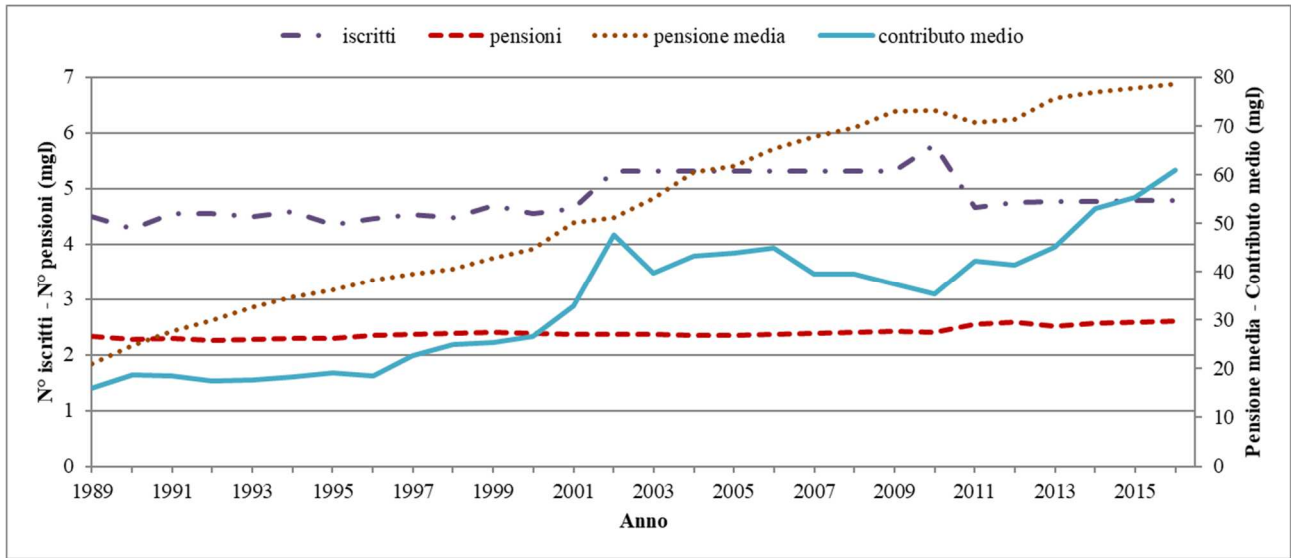
## CASSA RAGIONERI



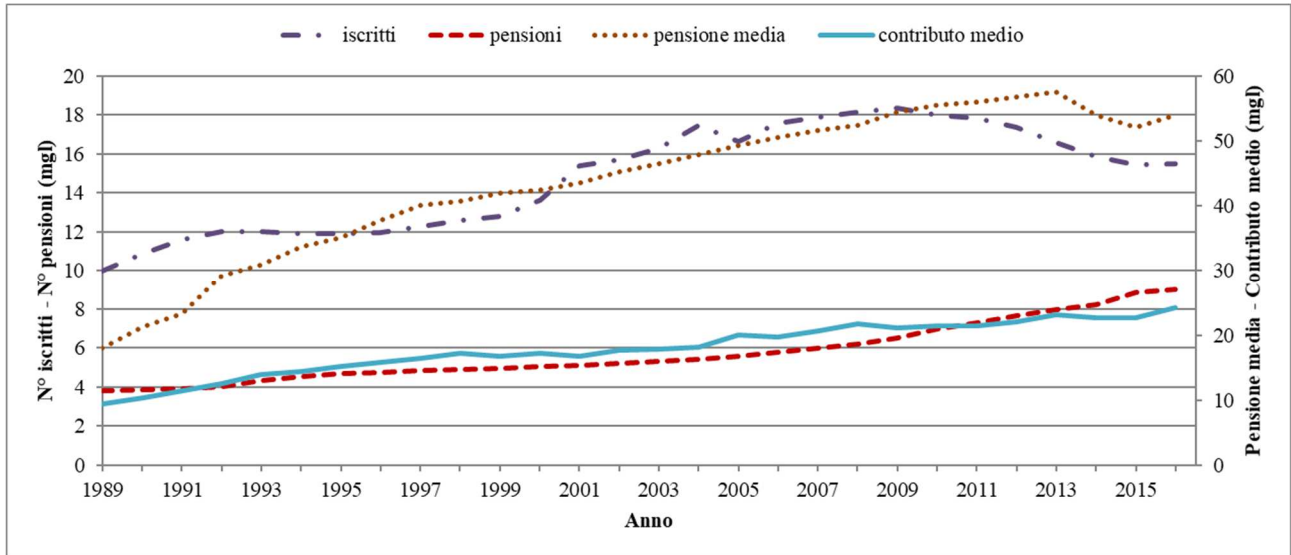
## CASSA COMMERCIALISTI



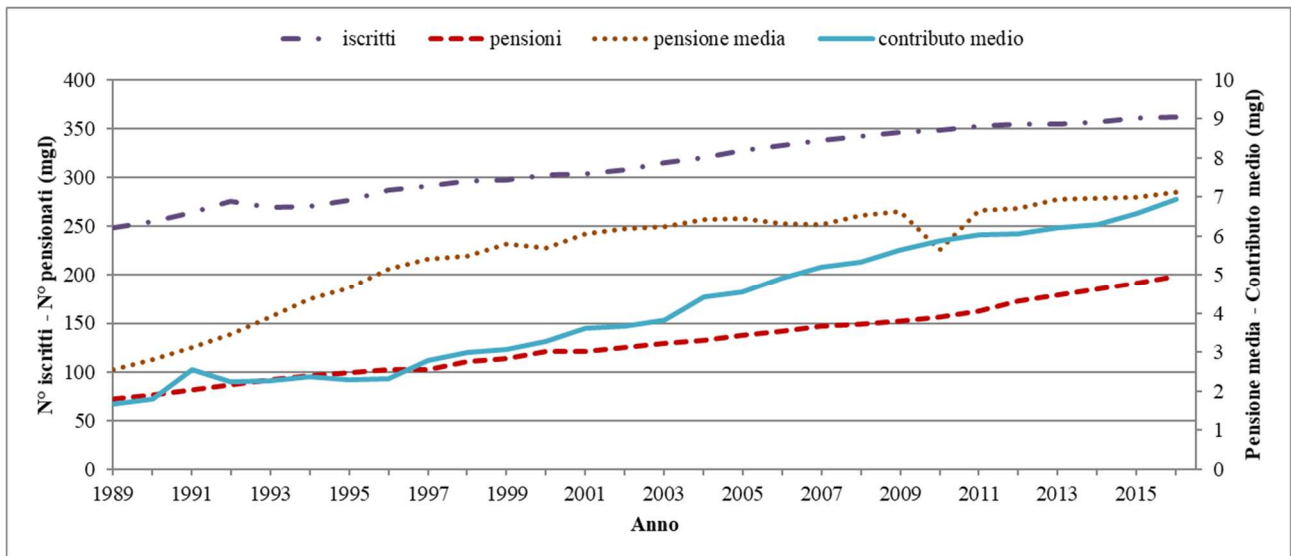
## CASSA NOTARIATO



## INPGI

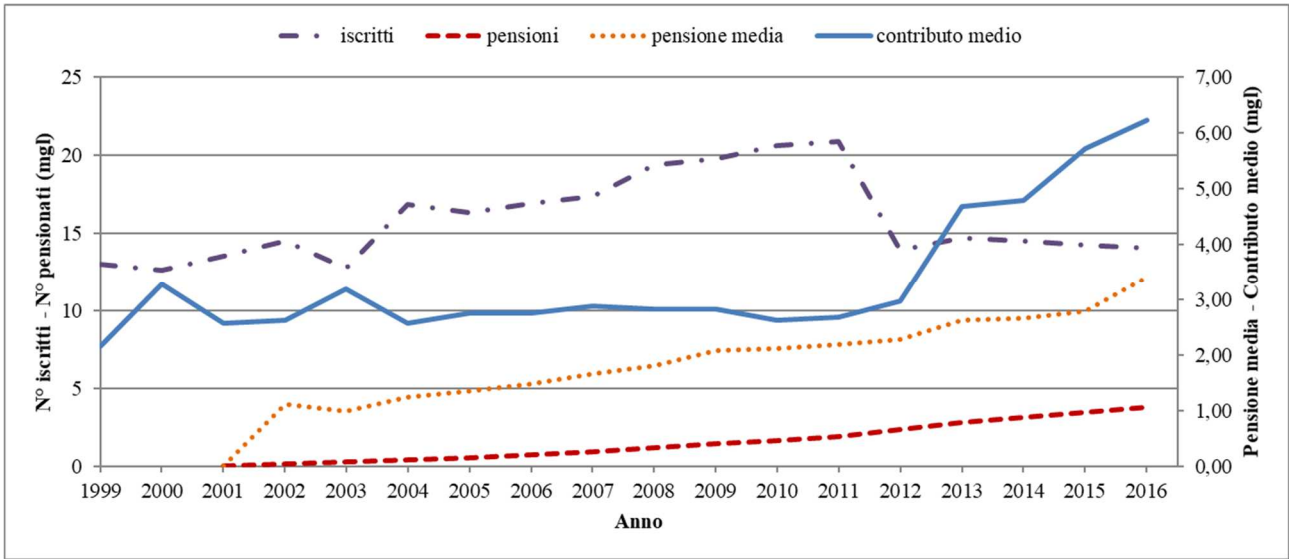


## ENPAM

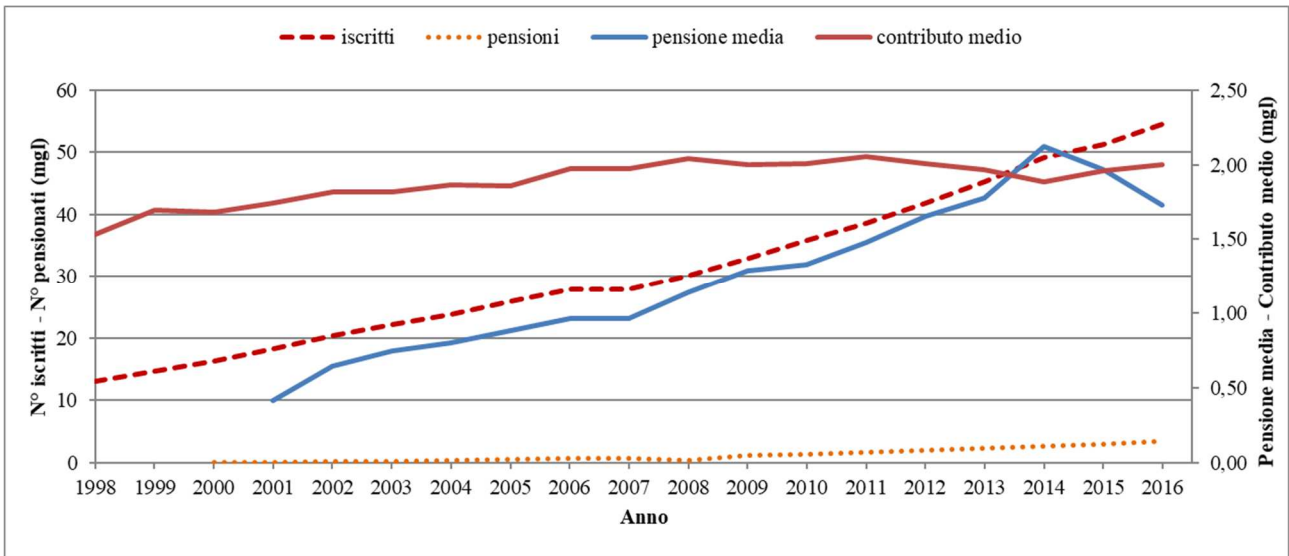


## CASSE 103

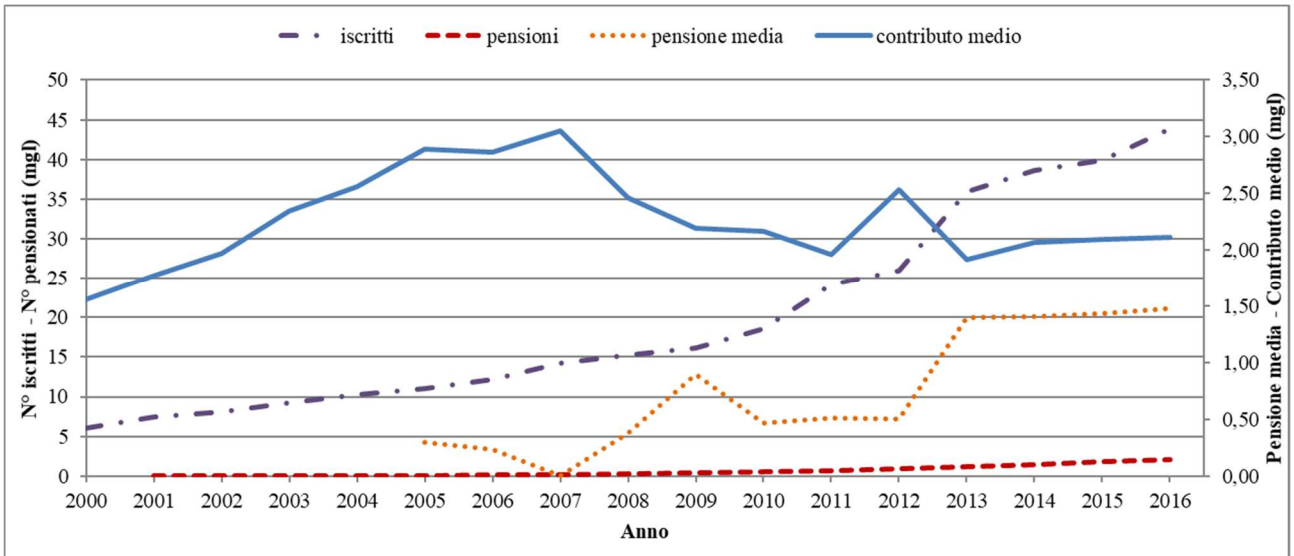
### EPPI



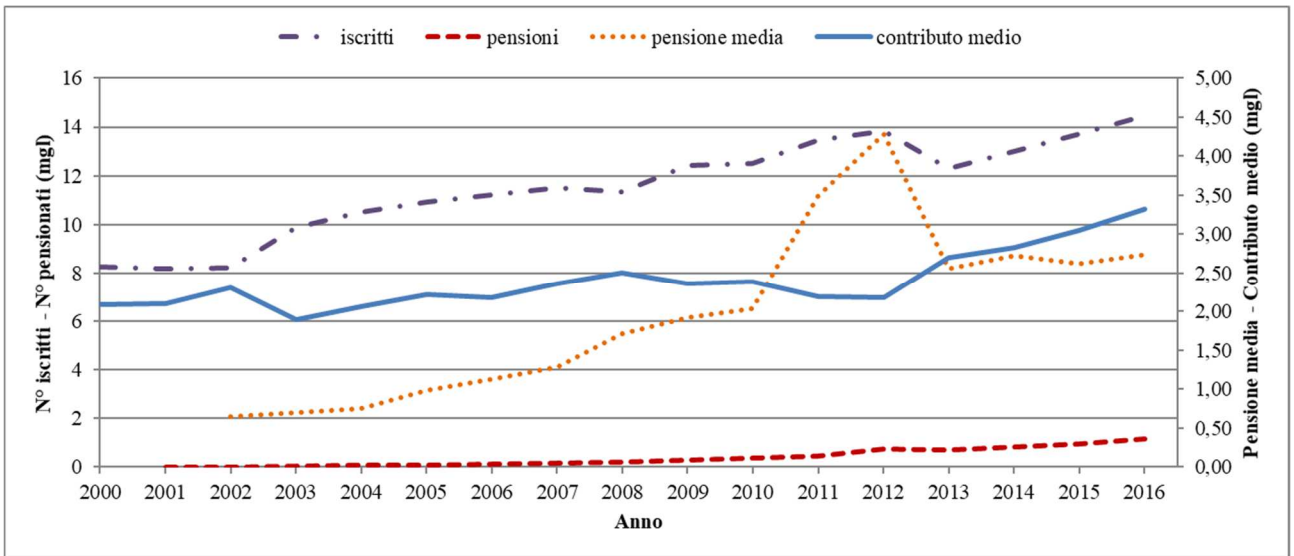
### ENPAP



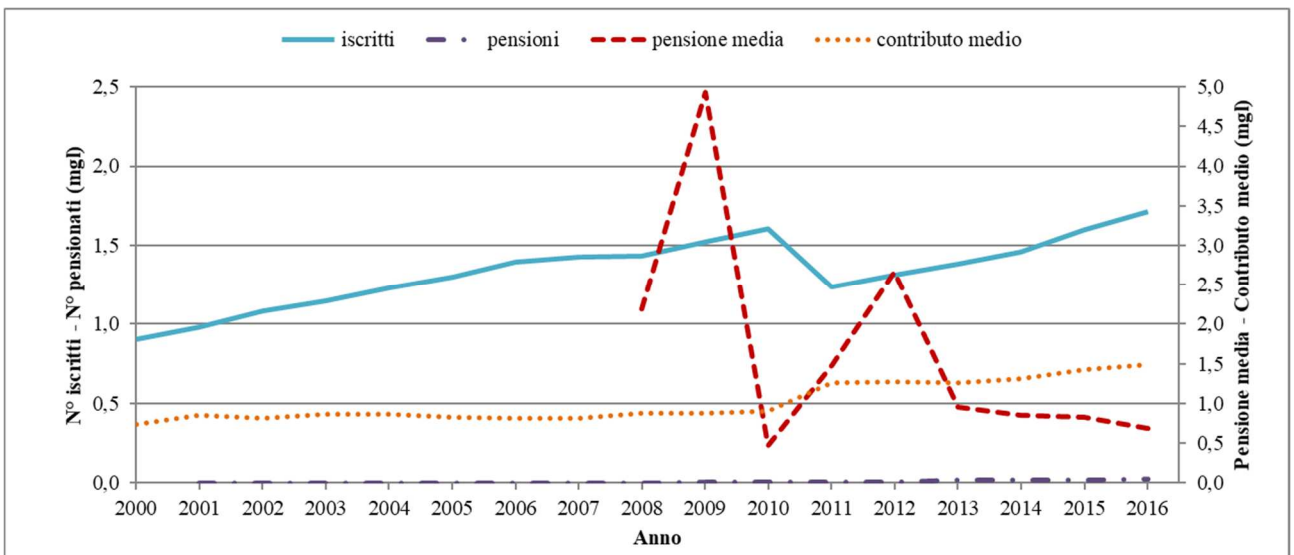
## ENPAPI



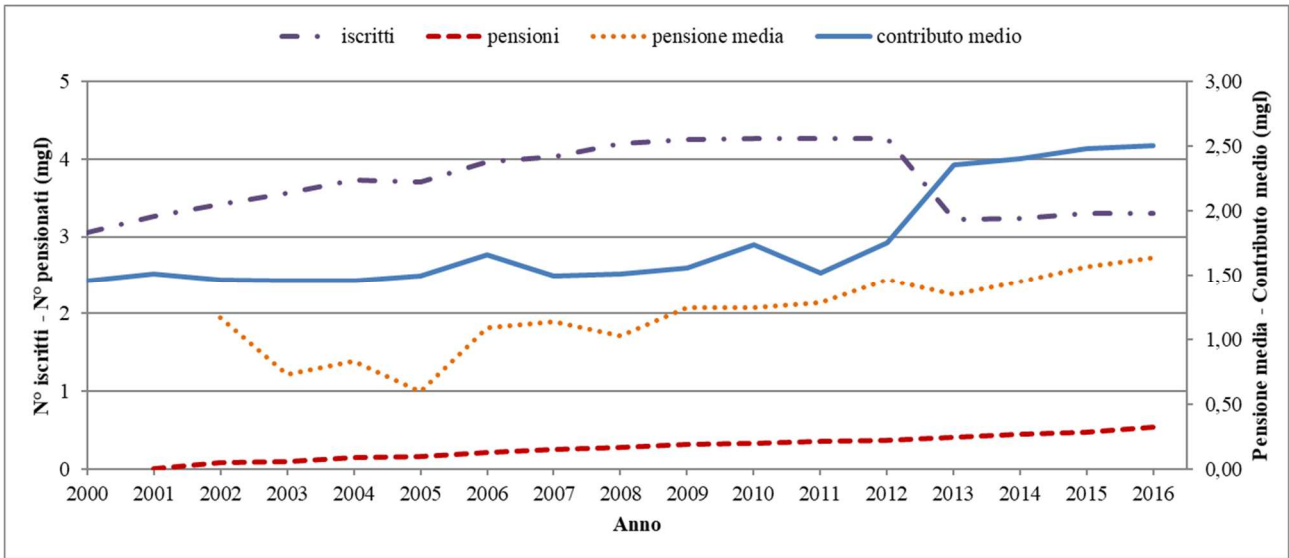
## ENPAB



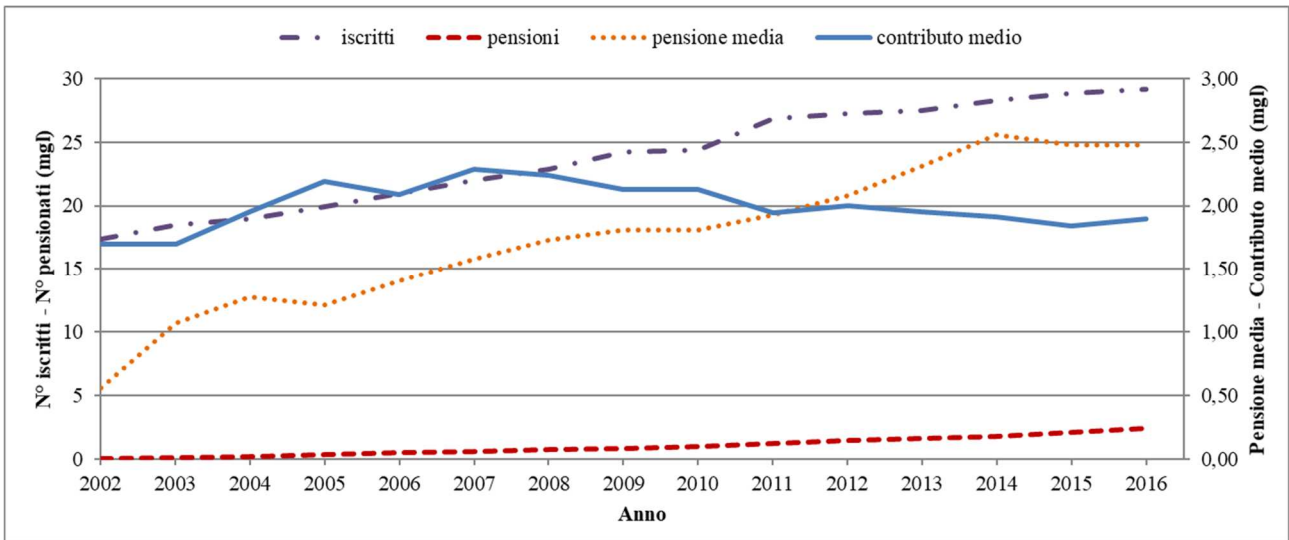
## ENPAIA AGROTECNICI



## ENPAIA AGRARI



## EPAP



## INPGI 2

